

32450

Hydrostatic Test Pump

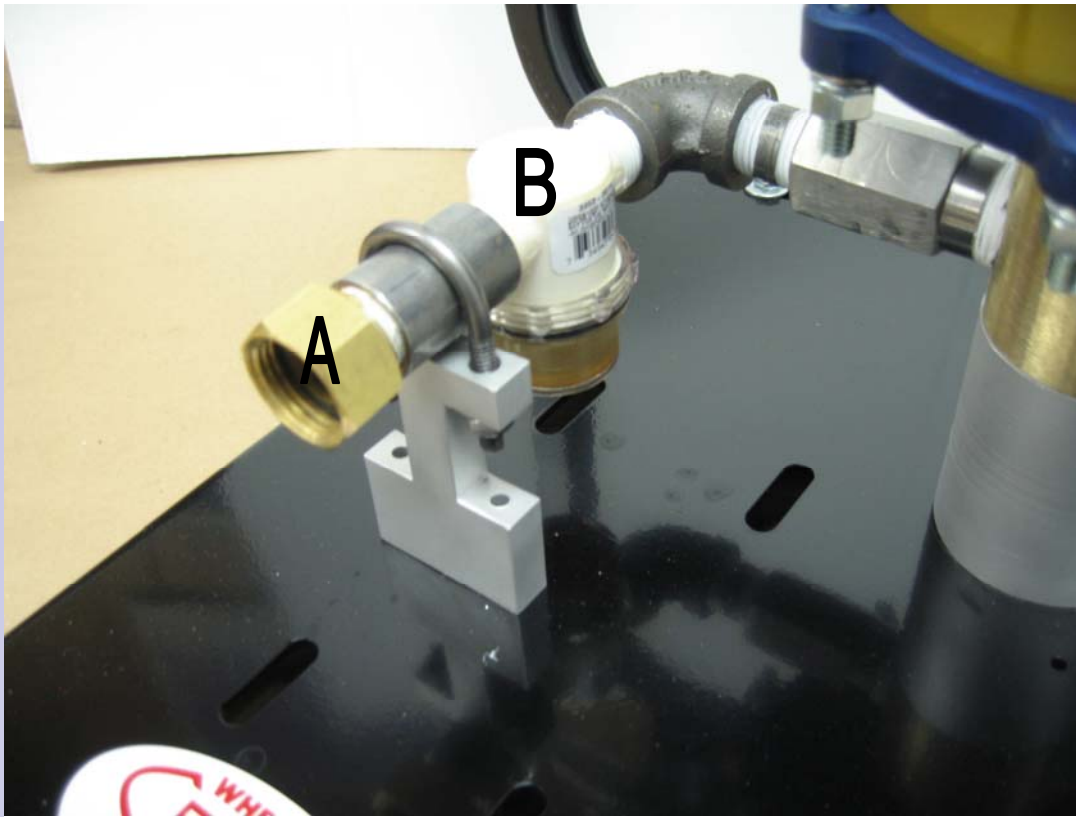


Wheeler-Rex • Ashtabula, Ohio

Tel: 800-321-7950 or 440-992-2925 • Fax: 440-992-2925

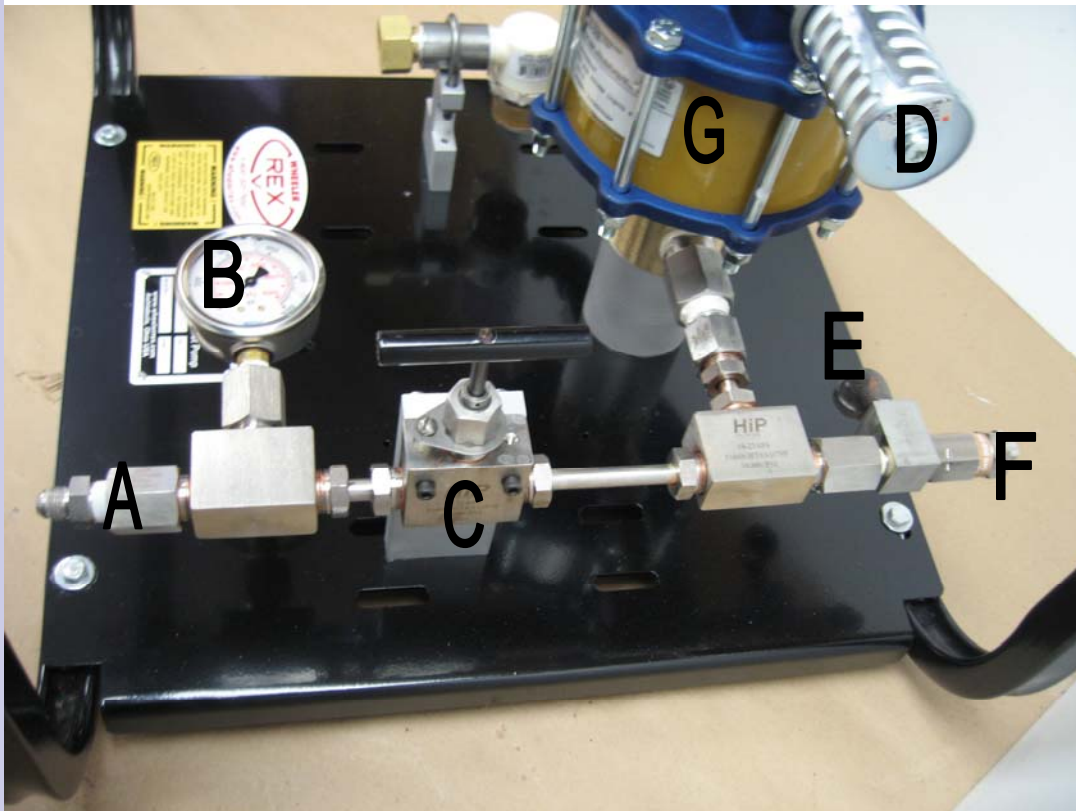
wheeler@wheelerrex.com • www.wheelerrex.com

Getting to Know Your Pump



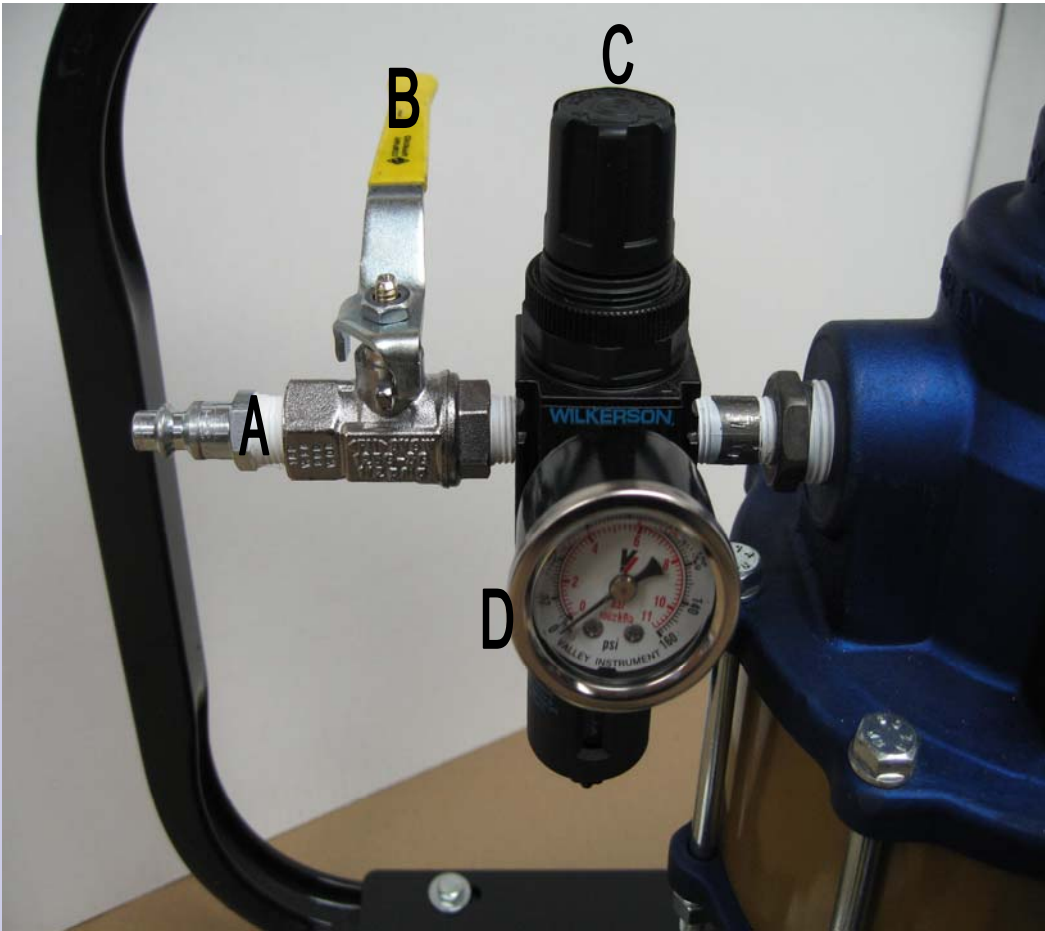
- A. Garden Hose connection (water inlet)
- B. Strainer with removable clear bowl

Fig. 1



- A. High pressure hose outlet connection
- B. Gauge
- C. Needle Valve
- D. Silencer
- E. Pressure relief outlet
- F. Pressure relief valve
- G. Air Pump

Fig. 2



- A. Air Nipple
(not supplied)
- B. Air Valve
- C. Air Regulator
- D. Air Gauge

Fig. 3

Connecting your test pump:

1. Connect water to the garden hose inlet ('A' FIG 1). Turn water source on. It may be necessary to unscrew the clear bowl ('B' FIG 1) to vent out any excess air from the water line.
2. Connect air line ('A' FIG 3) to test pump. Keep air valve ('B' FIG 3) in the 'off' position.
3. Connect output pressure line to test vessel.
4. Connect output pressure line to test pump ('A' FIG 2).
5. Open needle valve ('C' FIG 2). Turn counter clockwise to open valve.
6. Pull up (to unlock) on Air regulator cap ('C' FIG 3) and unscrew (counter clockwise) to set the incoming air pressure at 0 PSI.

Operating your Test pump:

1. Open air valve ('B' FIG 3)
2. Slowly start to turn air regulator cap ('C' FIG 3) clockwise until air pump starts working. Push air regulator cap down to lock air cap.
3. Incoming air pressure controls the output water pressure.
4. See Pressure Relief Valve Section.
5. Once the 'Test Pressure' has been met turn needle valve ('C' FIG 2) to the off position. Turn clockwise to close.
6. Air valve ('A' FIG 3) can now be turned off.
7. Pressure is now held between test vessel and needle valve.
 - a. Watch gauge ('B' FIG 2) for pressure drop.

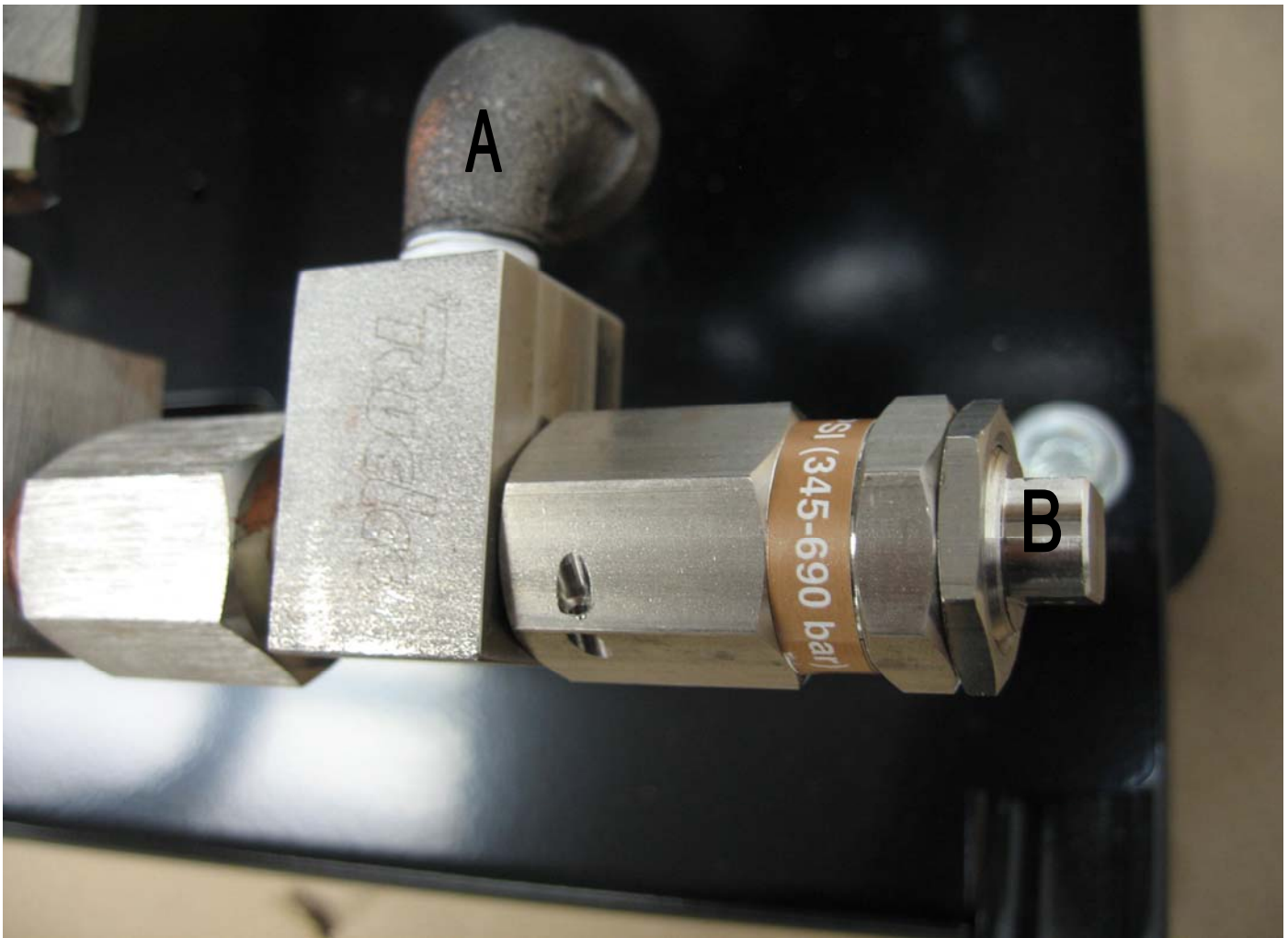


Fig. 4

Pressure relief valve is set at Wheeler-Rex to relieve pressure over 10,000psi.

- A. Outgoing water pressure is controlled by incoming air pressure. See chart below:

Input Air Pressure (approx)	Output Water Pressure (approx)
20psi	1,500psi
30psi	3,000psi
40psi	4,500psi
50psi	6,000psi
75psi	8,000psi
90psi	10,000psi

- B. Pressure relief valve ('B' Fig 4), is "set" to relieve pressure over 10,000psi. If air pressure exceeds approximately 90psi, water will then "dump" out of pressure relief outlet ('A' Fig 4).
- C. Pump is intended for high pressure applications. Therefore any "low pressure" applications less than 1,500psi may not work.

Maintenance

- Lube Free Pump (maintenance free)
- 50/50/ antifreeze / water solution should be run through the pump after testing to avoid freezing parts, while it lubricates the check valves and needle valve.

WARNING

GENERAL TOOL OPERATION WARNINGS

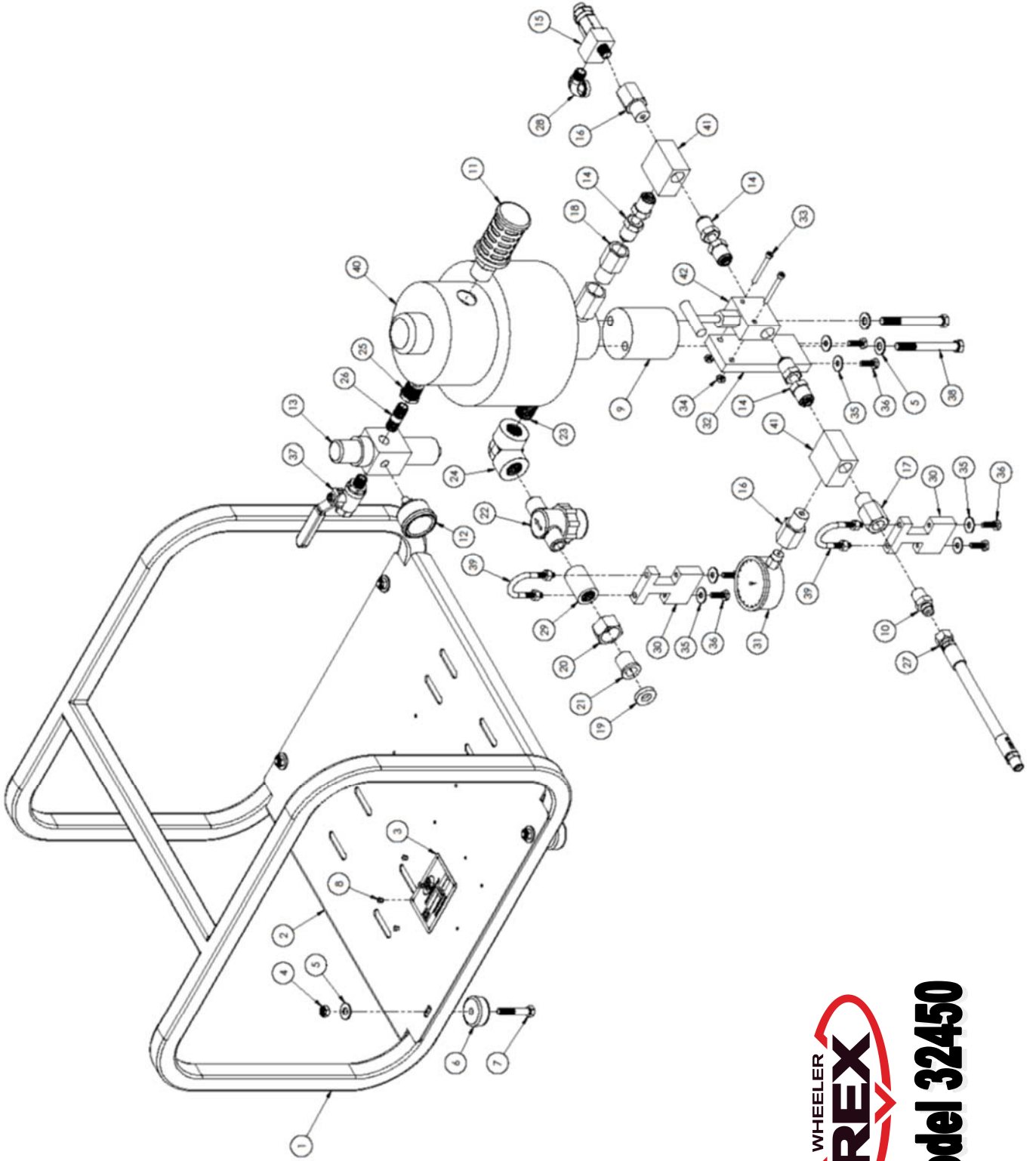
FOR ALL TOOLS-

1. **Keep Guards in Place** and in working order.
2. **Remove Adjusting Keys and Wrenches** from tool before turning it on.
3. **Keep Work Area Clean.** Cluttered areas and benches invite accidents.
4. **Avoid Dangerous Environment.** Don't use power tools in damp or wet locations. Keep work area well lit. Don't expose power tools to rain.
5. **If you must use an electric tool in a damp or wet location;** make sure it is plugged into a circuit which is protected by a ground fault interrupt.
6. **Keep Children Away. ALL VISITORS SHOULD BE KEPT A SAFE DISTANCE FROM WORK AREA.**
7. **Store Idle Tools** in dry, high, or locked-up place out of reach of children.
8. **Don't Force Tool.** It will do a better and safer job at the rate for which it is designed.
9. **Use Right Tool.** Don't force a small tool or attachment to do the job of a heavy-duty tool.
10. **Wear Proper Apparel.** No loose clothing or jewelry to get caught in moving parts. Rubber gloves and footwear are recommended when working outdoors.
11. **Use Safety Glasses.**
12. **Don't Abuse Cord.** Never carry tool by cord or yank it to disconnect from receptacle. Keep cord from heat, oil, and sharp edges.
13. **Secure Work.** Use clamps or vise to hold work when practical. It's safer than using your hand and it frees both hands to operate tool.
14. **Don't Overreach.** Keep proper footing and balance at all times.
15. **Maintain Tools Properly.** Keep tools sharp and clean for best and safest performance. Follow instructions for lubricating and changing accessories. Equipment operators must have proper maintenance & instruction sheets. Be sure the tool operator reads and understands this information. If you don't have current maintenance and instruction sheets, contact the factory & we will supply them at no charge.
16. **Disconnect Tools** when not in use; before servicing; when changing accessories such as dies, cutters, etc.
17. **Avoid Accidental Starting.** Don't carry plugged-in tool with finger on switch. Be sure switch is off when plugging in.
18. **Outdoor Use Extension Cords.** When tool is used outdoors, use only extension cords suitable for use outdoors and so marked.
19. **Wear Ear Protection** if exposed to long periods of very noisy shop operations.
20. **Do not operate** tools while under the influence of alcohol, drugs or medication.



WHEELER-REX LIMITED LIFETIME WARRANTY

WHEELER-REX covers its products with a Limited Lifetime Warranty, with exception of pipe threading machines which have a Limited Three Year Warranty (including electric motors). Warranties from manufacturers of components used in our products may pre-empt the Wheeler-Rex warranty. Wheeler-Rex warrants against defects in material or workmanship. To take advantage of this warranty, the complete product must be delivered prepaid to Wheeler-Rex or any WHEELER-REX AUTHORIZED SERVICE CENTER. No tools are to be returned to the factory without receiving prior authorization. Obviously, failures due to misuse, abuse, or normal wear and tear are not covered by this warranty. **NO OTHER WARRANTY, WRITTEN, OR ORAL, APPLIES. THERE ARE NO WARRANTIES WHICH EXTEND BEYOND THE DESCRIPTION ON THE FACE HEREOF.** No employee, agent, dealer, or other person is authorized to give any warranty on behalf of Wheeler-Rex. Warranted products will be repaired or replaced at our option, at no charge and returned to you via prepaid transportation. Such replacement or repair is the exclusive remedy available from Wheeler-Rex. Wheeler-Rex is not liable for damage of any sort, including incidental and consequential damages. Some U.S.A. states do not allow the exclusion or limitation of incidental or consequential damages, so the above limitation or exclusion may not apply. This warranty gives you specific legal rights, and you may also have other rights which vary from state to state.



Model 32450

Item No	Part No	Description	Qty
1	700800	SMALL PUMP CAGE	1
2	700797	BASE PLATE	1
3	220874	NAME PLATE	1
4	275857	5/16-18 HEX NYLON INSERT LOCKNUTS	4
5	5110	3/8" FLAT WASHER	6
6	276443	RUBBER FOOT	4
7	275639	5/16-18 x 1 3/4" HHCS	4
8	275543	POP RIVET, STAR 4-2AAD	4
9	701410	PUMP SPACER	1
10	277206	10000 PSI HOSE ADAPTER	1
11	277214	SILENCER 3/4" NPTM	1
12	276444	GAUGE	1
13	276435	PRESSURE REGULATOR	1
14	701414	NUT & TUBE ASSEMBLY	3
15	277207	RELIEF VALVE	1
16	277211	H.P. 1/4" FNPT ADAPTER	2
17	277212	H.P. 3/8" FNPT ADAPTER	1
18	277217	H.P. 1/2" MNPT ADAPTER	1
19	275941	HOSE WASHER	1
20	275925	SWIVEL NUT	1
21	275918	SWIVEL ADAPTER	1
22	276420	STRAINER ASSEMBLY	1
23	275669	1/2 x CLOSE PIPE NIPPLE	1
24	275697	1/2" 3000LB FS SCR D 90 ELL	1
25	275670	1/2 x 1/4 FS SCR D HX BUSH	1
26	276465	1/4" x 1 1/2" PIPE NIPPLE	1
27	3918	HOSE	1
28	275664	1/4" NPT STREET ELL	1
29	275475	1/2" COUPLING	1
30	701412	INLET SPACER	2
31	277215	0-15000 PSI GAUGE	1
32	701411	VALVE SPACER	1
33	277219	#10-24 x 1 3/4" LONG	2
34	276543	#10-24 ESNA STOP NUT, THIN	2
35	276540	1/4" FLAT WASHER	6
36	560081	1/4-20 x 3/4" HHCS	6
37	277218	1/4" BRASS BALL VALVE	1
38	277210	3/8-24 X 3 1/2" LONG HHCS	2
39	277220	U-BOLT	2
40	277205	PNEUMATIC PUMP	1
41	277208	10000 PSI TEE	2
42	277209	10000 PSI NEEDLE VALVE	1



Wheeler-Rex • Ashtabula, Ohio

Tel: 800-321-7950 or 440-992-2925 • Fax: 440-992-2925

wheeler@wheelerrex.com • www.wheelerrex.com