

Step #1



Remove the (8) screws – T10 bit

Step #2

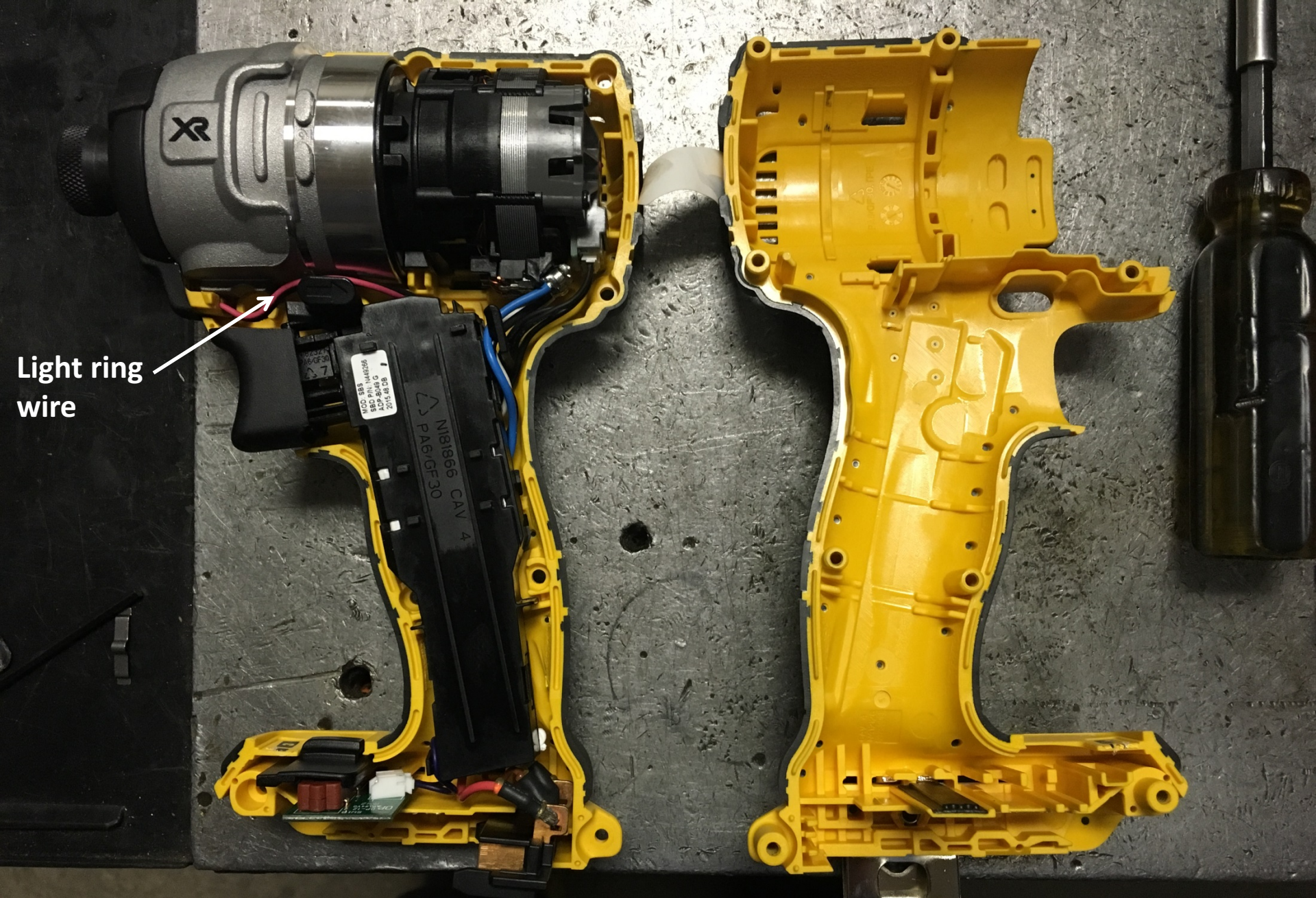
sticker

3rd sticker on bottom side of motor where battery connects

sticker

Turn motor over to remove "Dewalt" side of the motor shell
(3) Stickers will need to be cut down seam to separate the two halves of the shell





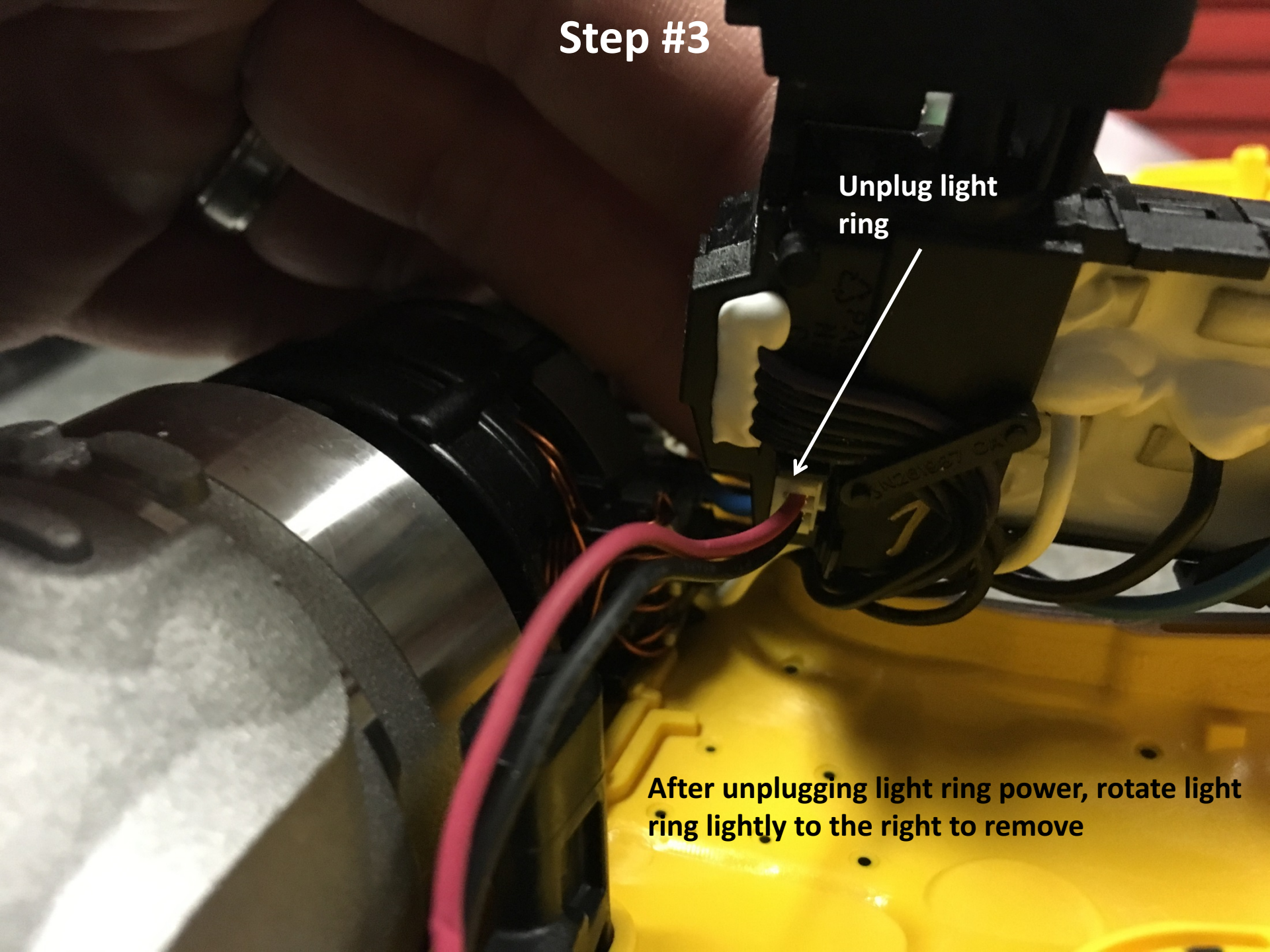
Light ring wire

Light ring wire plugs in on the under side of the trigger assembly. Lift up assembly slightly to gain access to the outlet connection. (See next slide)

Step #3

Unplug light
ring

After unplugging light ring power, rotate light ring lightly to the right to remove



Step #4

Note: light ring is now gone



Reassemble motor
Make sure everything is back in it's proper location or shell won't go back together.

DWA6G2 adaptor
Note the notches



Step #5



Align the notches with the (3) prongs on the nose of the motor

Step #6

Tighten the (3) set screws and you're ready to use the motor.

