

Operating Instructions

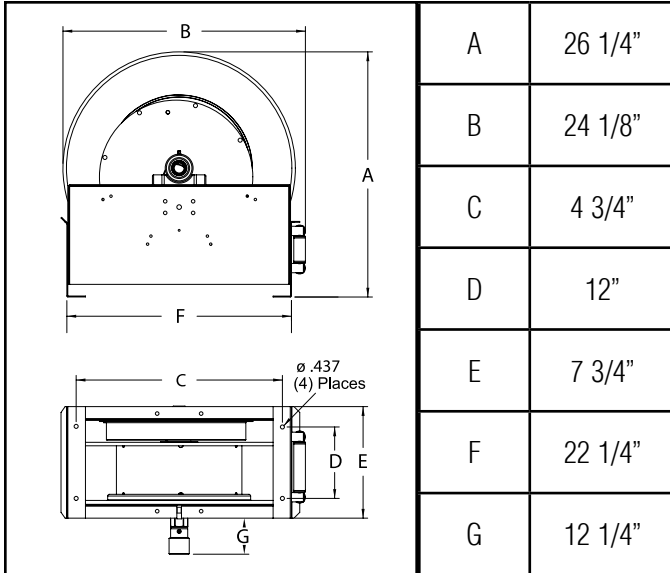
Series E9000 Spring Driven Hose Reels

Low Pressure Model Numbers:

E9200 OLP	E9330 OLP	E9305 OLP	E9450 OLP
E9275 OLP	E9340 OLP	E9399 OLP	
E9299 OLP	E9350 OLP	E9400 OLP	
E9300 OLP	E9375 OLP	E9430 OLP	



Dimensions



SAFETY

1. Models designed for fuel are coded with the prefix "F" i.e., "FE9400 OLP." Check name plate on the reel before installing.
2. Do not use reel at higher pressures or temperatures than listed on the back of this bulletin.
3. Remove all spring tension before beginning disassembly process.
4. Reel spring motor case is permanently sealed. Any attempt to remove the spring motor may cause serious injury.

INSTALLATION:

The swivel union is packed separately in the reel carton, use teflon tape to assure a satisfactory seal. A flexible hose connection must be used between the hose reel inlet and the source of supply to prevent possible misalignment and binding. Non flexible connections will void the warranty, pressure rating of inlet hose must be equal to or more than the pressure rating of the reel. Consult factory for proper spring when installing reels above 16 ft.

LUBRICATION:

Hose reel spring and bearings are factory lubricated and require no further lubrication.

REPLACING HOSE:

1. Wind spool flange clockwise-facing swivel-until spring is tight.
2. Back off three turns and latch.
3. Insert hose through roller guide.
4. Connect hose fitting to female outlet ell.

ADJUSTMENTS:

To adjust spring tension, add or remove wraps of hose from the spool, one wrap at a time until desired tension is obtained.

REPAIRS:

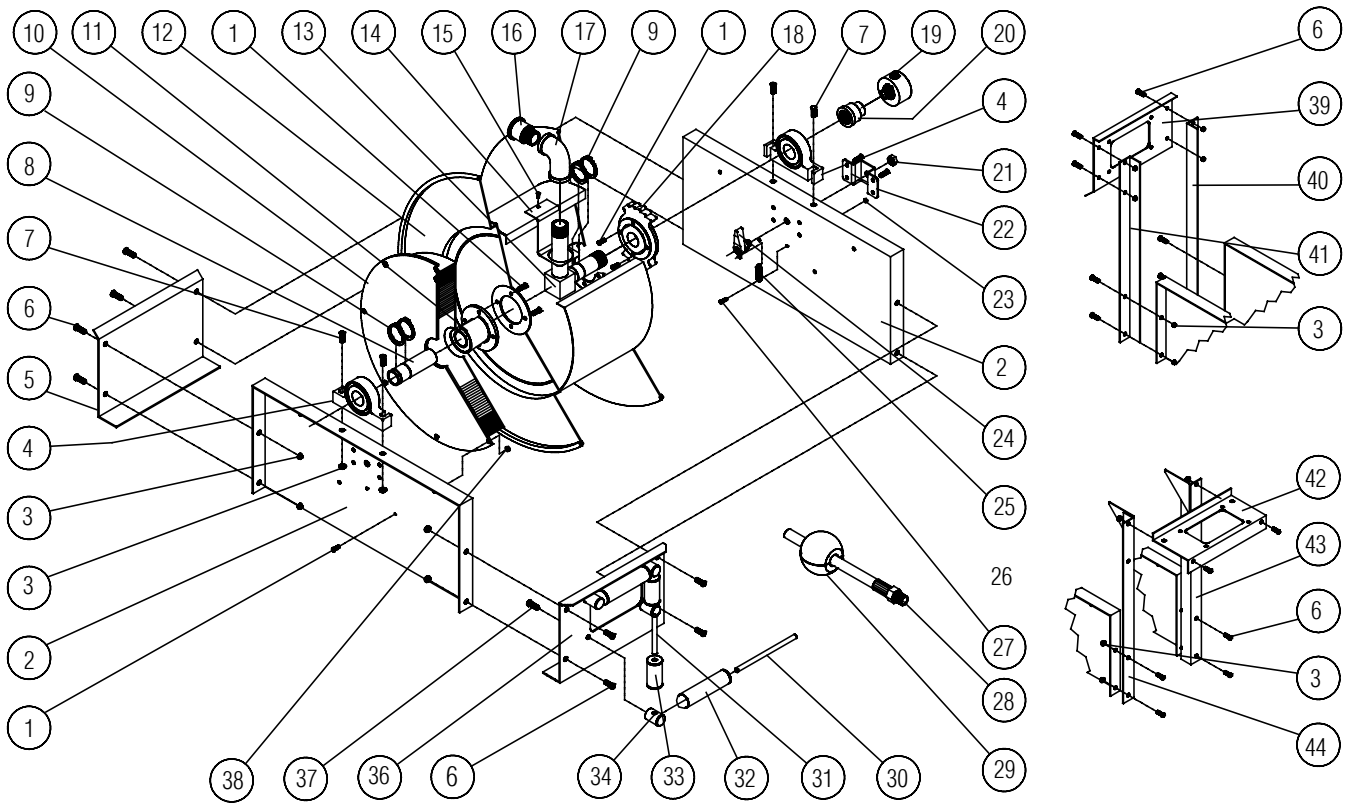
Extensive repairs should be performed only by an authorized serviceman or factory to avoid damage which may void your warranty. Remove all spring tension before beginning disassembly process.

MODIFICATION:

Hose latching mechanism can be removed for constant tension applications.

Form# 613-193 Rev: 6/2018

Series E9000 Spring Driven Hose Reels



Item #	Part #	# Req	Description	Item #	Part #	# Req	Description
1	S2-41	16	1/4-20 x 1/2" hex screw	24	S600454	1	Latch pawl assembly
2	270009	2	Side frame	25	S260067	1	Latch spring
3	S281-6	12	3/8-16 hex flange nut	27	S393-2	1	10-32 shoulder screw
4	S600416	2	Pillow block	30	S270016	2	Guide roller pin - long
5	270012	1	End frame support	31	S270015	2	Guide roller pin - short
6	S44-2	8	3/8-16 x 5/8" mach. screw	32	262436-5.468	2	Guide roller
7	S44-8	4	3/8-16 x 1 3/4" screw	33	262436-2.968	2	Guide roller
8	602377	1	Support shaft	34	S270014	4	Guide roller post
9	S140-34	6	Snap ring	36	270011	1	Hose guide roller plate
11	260888	1	Spring arbor	37	S2-51	4	5/16-18 x 1/2" hex screw
13	602364	1	Inlet tube	38	S281-4	8	1/4-20 hex nut
14	270029	1	Hose outlet support	39	270045	1	Guide roller plate SW
15	S32-136	1	#10 x 3/8" self tap screw	40	270043	1	SW support bracket
17	270028	1	90° female NPT ell	41	270042	1	SW support bracket
18	260889	1	Latch ratchet	42	270044	1	Guide roller plate TW
21	S280-8	1	1/2-20 hex flange nut	43	270041	1	TW support bracket
22	260934	1	Latch bracket	44	270040	1	TW support bracket
23	S82-15	1	10-32 x 3/8" nyloc nut				

Series E9000 Spring Driven Hose Reels

Item #	Description	# Req	E9200 OLP	E9275 OLP	E9299 OLP	E9300 OLP	E9330 OLP	E9340 OLP	E9350 OLP
5	End frame support	1	270012	270012	270012	270012	270012	270012	270012
10	Spring case assembly	1	S600413-1	S600413-1	S602722	S600413-2	S600413-2	S600413-2	S600413-2
11	Spring arbor	1	260888	260888	396888	260888	260888	260888	260888
12	Sheave assembly	1	600415	600415	600415	600415	600415	600415	600415
16	Reducing bushing	1	300080	300080	300080	270025	270025	270025	270025
19	Swivel assembly	1	S600888-1	S600888-1	S600888-1	S602026	S602026	S602026	S602026
20	Reducing coupling	1	S289-5	S289-5	S289-5	S289-6	S289-6	S289-6	S289-6
28	Hose assembly	1	None	601020-75	601020-100	None	S601026-30	S601026-40	S601026-50
29	Bumper stop assembly	1	None	2-HR1005	2-HR1005	None	3-HR1005	3-HR1005	3-HR1005
39	Guide roller plate SW	1	270045	270045	270045	270045	270045	270045	270045
42	Guide roller plate TW	1	270044	270044	270044	270044	270044	270044	270044
--	Hose ID and length	--	None	1/2" x 75'	1/2" x 100'	None	3/4" x 30'	3/4" x 40'	3/4" x 50'
--	Working pressure	--	500 PSI	300 PSI	300 PSI	500 PSI	300 PSI	300 PSI	300 PSI
--	Max. temperature	--	210 °F	150 °F	150 °F	210 °F	150 °F	150 °F	150 °F

Item #	Description	# Req	E9375 OLP	E9305 OLP	E9399 OLP	E9400 OLP	E9430 OLP	E9450 OLP
5	End frame support	1	270012	262104	262104	270012	270012	270012
10	Spring case assembly	1	S600413-2	S602722	S602722	S600413-2	S600413-2	S600413-2
11	Spring arbor	1	260888	396888	396888	260888	260888	260888
12	Sheave assembly	1	600415	601081	601081	600414	600414	600414
16	Reducing bushing	1	270025	270025	270025	None	None	None
19	Swivel assembly	1	S602026	S602026	S602026	S600682	S600682	S600682
20	Reducing coupling	1	S289-6	S289-6	S289-6	None	None	None
28	Hose assembly	1	S601026-75	None	S601026-100	None	S601027-30	S601027-50
29	Bumper stop assembly	1	3-HR1005	None	3-HR1005	None	4-HR1005	4-HR1005
39	Guide roller plate SW	1	270045	262680	262680	270045	270045	270045
42	Guide roller plate TW	1	270044	262679	262679	270044	270044	270044
--	Hose ID and length	--	3/4" x 75'	None	3/4" x 100'	None	1" x 30'	1" x 50'
--	Working pressure	--	300 PSI	500 PSI	300 PSI	500 PSI	300 PSI	300 PSI
--	Max. temperature	--	150 °F	210 °F	150 °F	210 °F	150 °F	150 °F