

Operating Instructions

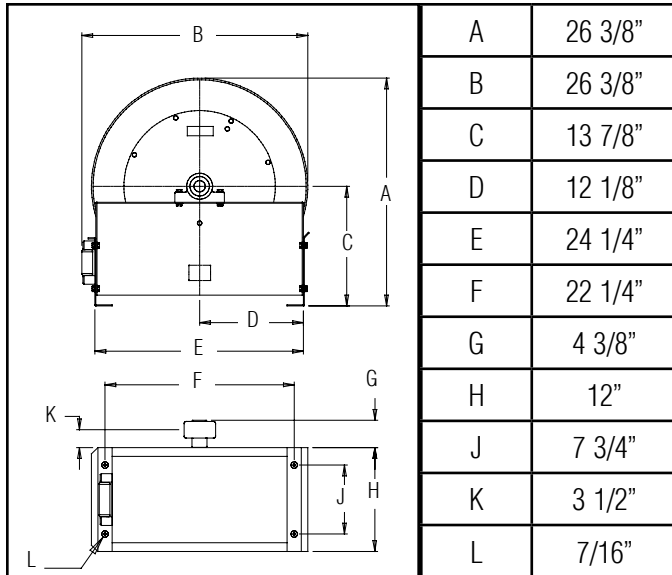
Series E9000 Spring Driven Hose Reels

Medium Pressure Model Numbers:

E9200 OMP E9300 OMP E9400 OMP
E9275 OMP E9330 OMP E9450 OMP
E9350 OMP



Dimensions



Four 7/16" diameter mounting holes

SAFETY

1. Models designed for fuel are coded with the prefix "F" i.e., "FE9400 OMP." Check name plate on the reel before installing.
2. Do not use reel at higher pressures or temperatures than listed on the back of this bulletin.
3. Remove all spring tension before beginning disassembly process.
4. Reel spring motor case is permanently sealed. Any attempt to remove the spring motor may cause serious injury.

INSTALLATION:

The swivel union is packed separately in the reel carton, use teflon tape to assure a satisfactory seal. A flexible hose connection must be used between the hose reel inlet and the source of supply to prevent possible misalignment and binding. Non flexible connections will void the warranty, pressure rating of inlet hose must be equal to or more than the pressure rating of the reel. Consult factory for proper spring when installing reels above 16 ft.

LUBRICATION:

Hose reel spring and bearings are factory lubricated and require no further lubrication.

REPLACING HOSE:

1. Wind spool flange clockwise-facing swivel-until spring is tight.
2. Back off three turns and latch.
3. Insert hose through roller guide.
4. Connect hose fitting to female outlet ell.

ADJUSTMENTS:

To adjust spring tension, add or remove wraps of hose from the spool, one wrap at a time until desired tension is obtained.

REPAIRS:

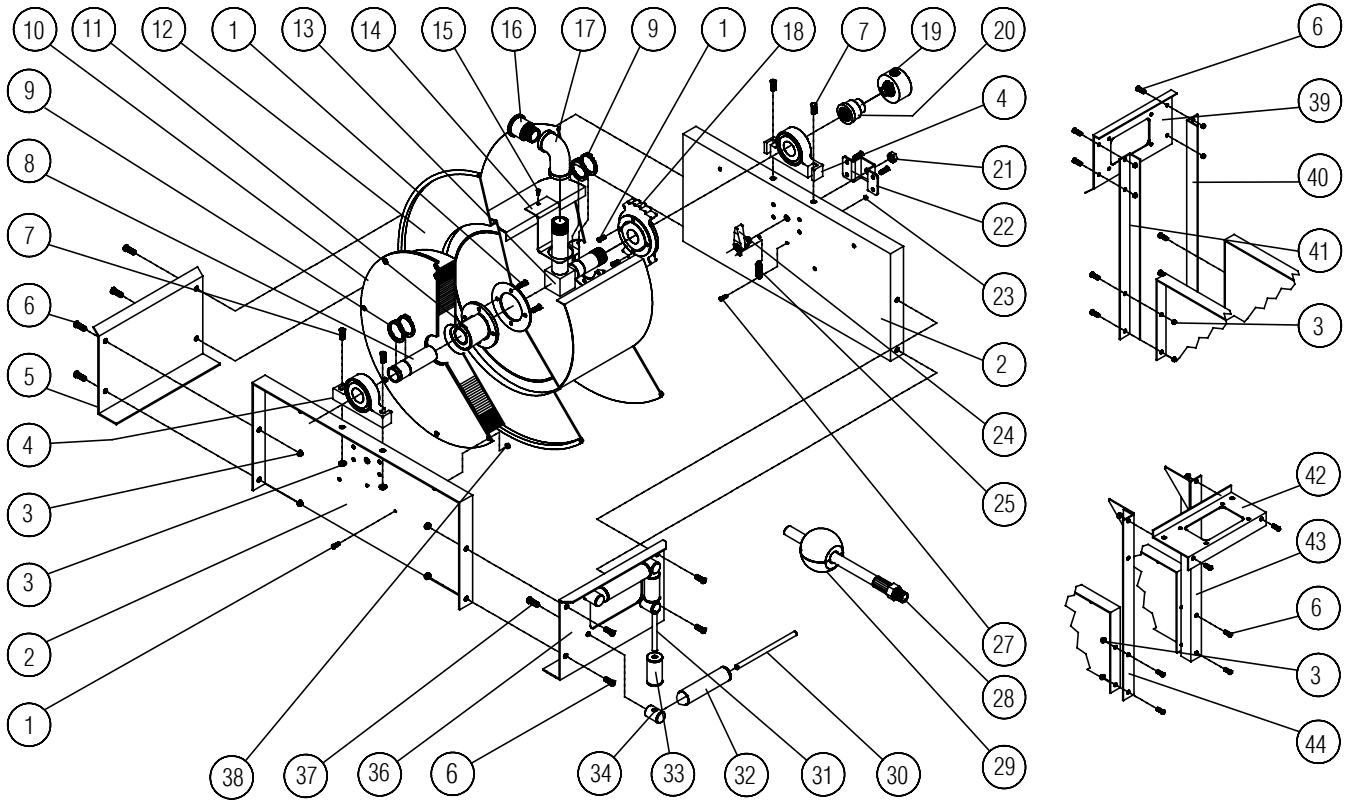
Extensive repairs should be performed only by an authorized serviceman or factory to avoid damage which may void your warranty. Remove all spring tension before beginning disassembly process.

MODIFICATION:

Hose latching mechanism can be removed for constant tension applications.

Form# 614-193 Rev: 6/2018

Series E9000 Spring Driven Hose Reels



| Item # | Part # | # Req | Description | Item # | Part # | # Req | Description | Item # | Part # | # Req | Description |
|--------|---------|-------|---------------------------|--------|---------|-------|---------------------------|--------|--------------|-------|--------------------------|
| 1 | S2-41 | 16 | 1/4-20 x 1/2" hex screw | 15 | S32-136 | 1 | #10 x 3/8" self tap screw | 32 | 262436-5.468 | 2 | Guide roller |
| 2 | 270009 | 2 | Side frame | 17 | 270039 | 1 | 90° female NPT ell | 33 | 262436-2.968 | 2 | Guide roller |
| 3 | S281-6 | 12 | 3/8-16 hex flange nut | 18 | 260889 | 1 | Latch ratchet | 34 | S270014 | 4 | Guide roller post |
| 4 | S600416 | 2 | Pillow block | 21 | S280-8 | 1 | 1/2-20 hex flange nut | 36 | 270011 | 1 | Hose guide roller plate |
| 5 | 270012 | 1 | End frame support | 22 | 260934 | 1 | Latch bracket | 37 | S2-51 | 4 | 5/16-18 x 1/2" hex screw |
| 6 | S44-2 | 8 | 3/8-16 x 5/8" mach. screw | 23 | S82-15 | 1 | 10-32 x 3/8" nyloc nut | 38 | S281-4 | 8 | 1/4-20 hex nut |
| 7 | S44-8 | 4 | 3/8-16 x 1 3/4" screw | 24 | S600454 | 1 | Latch pawl assembly | 39 | 270045 | 1 | Guide roller plate SW |
| 8 | 602377 | 1 | Support shaft | 25 | S260067 | 1 | Latch spring | 40 | 270043 | 1 | SW support bracket |
| 9 | S140-34 | 6 | Snap ring | 27 | S393-2 | 1 | 10-32 shoulder screw | 41 | 270042 | 1 | SW support bracket |
| 11 | 260888 | 1 | Spring arbor | 30 | S270016 | 2 | Guide roller pin - long | 42 | 270044 | 1 | Guide roller plate TW |
| 13 | 602364 | 1 | Inlet tube | 31 | S270015 | 2 | Guide roller pin - short | 43 | 270041 | 1 | TW support bracket |
| 14 | 270029 | 1 | Hose outlet support | | | | | 44 | 270040 | 1 | TW support bracket |

| Item # | Description | # Req | E9200 OMP | E9275 OMP | E9300 OMP | E9330 OMP | E9350 OMP | E9400 OMP | E9450 OMP |
|--------|----------------------|-------|-----------|------------|-----------|------------|------------|-----------|-----------|
| 10 | Spring case assembly | 1 | 600413-1 | 600413-1 | S600413-2 | S600413-2 | S600413-2 | S600413-2 | S600413-2 |
| 12 | Sheave assembly | 1 | 600415 | 600415 | 600415 | 600415 | 600415 | 600414 | 600414 |
| 16 | Reducing bushing | 1 | S174-112 | S174-112 | 300055 | 300055 | 300055 | None | None |
| 19 | Swivel assembly | 1 | S602033 | S602033 | S602026 | S602026 | S602026 | S600682 | S600682 |
| 20 | Reducing coupling | 1 | S290-5 | S290-5 | S290-6 | S290-6 | S290-6 | None | None |
| 28 | Hose assembly | 1 | None | S24-260043 | None | S26-260043 | S27-260043 | None | 602574-50 |
| 29 | Bumper stop assembly | 1 | None | 2-HR1005 | None | 3-HR1005 | 3-HR1005 | None | 4-HR1005 |
| -- | Hose ID and length | -- | None | 1/2" x 75' | None | 3/4" x 30' | 3/4" x 50' | None | 1" x 50' |
| -- | Working pressure | -- | 3250 PSI | 3250 PSI | 3000 PSI | 1250 PSI | 1250 PSI | 3250 PSI | 3250 PSI |
| -- | Max. temperature | -- | 210 °F | 210 °F | 210 °F | 210 °F | 210 °F | 210 °F | 210 °F |