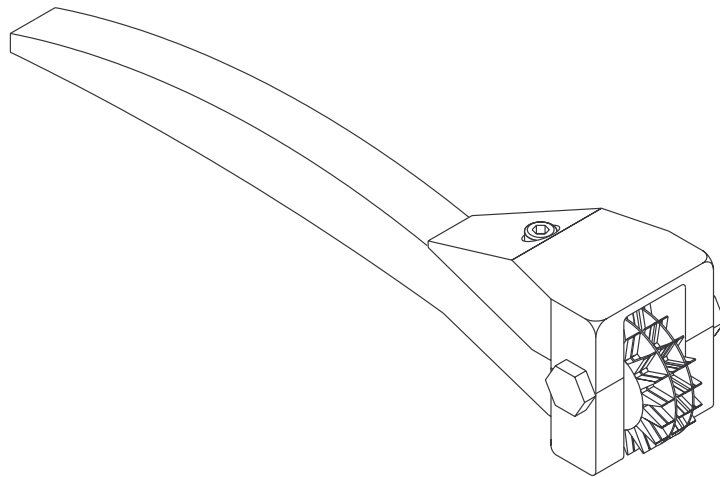




# HEAVY-DUTY GRINDING WHEEL DRESSER



***Read carefully and follow all safety rules and operating instructions before first use of this product.***

## DESCRIPTION

The Palmgren Grinding Wheel Dresser trues, sets, shapes, and removes glaze from grinding wheels. Grinding wheel dresser has seven star-toothed hardened steel cutters and two spacers. Face width is .930" for use on grinding wheel face up to 3 1/2".

## SAFETY RULES

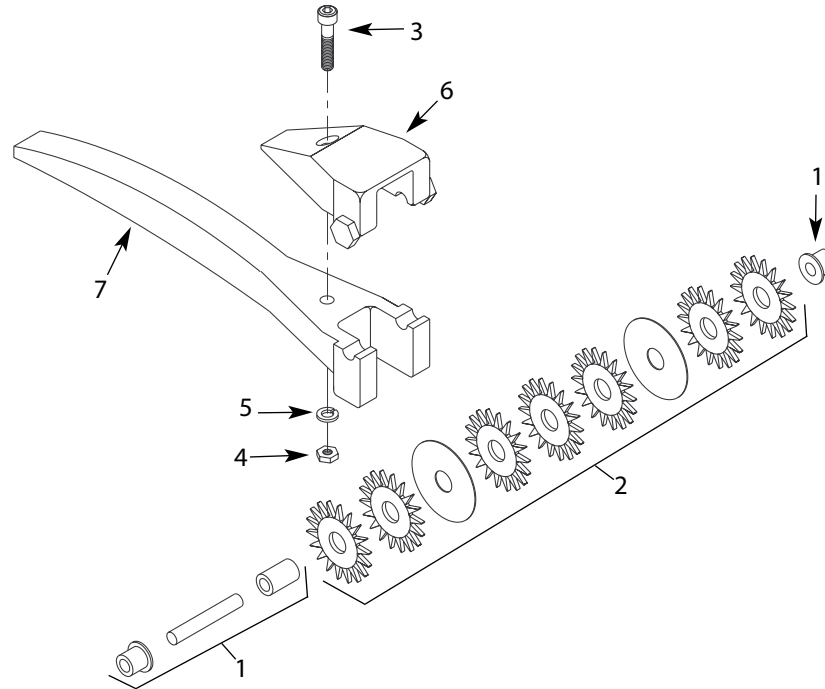
**CAUTION:** Always follow proper operating procedures as defined in this manual — even if you are familiar with use of this or similar tools. Remember that being careless for even a fraction of a second can result in severe personal injury.

- Understand and obey all safety instructions supplied with grinder on which the dresser will be used.

- Wear safety glasses complying with United States ANSI Z87.1. Everyday glasses have only impact resistant lenses. They are **NOT** safety glasses.
- Wear face mask or dust mask if operation is dusty.
- Adjust distance between wheel and tool rest. Immediately after dressing the grinding wheel make sure the distance between the wheel and the tool rest is 1/16" maximum

## OPERATIONS

Rest the wheel dresser on tool rest. Use light pressure and work it side to side across the face of the revolving wheel until the face is clean, straight and smooth.



**Figure 1 - Replacement Parts Illustration for Grinding Wheel Dresser**

### REPLACEMENT PARTS LIST FOR GRINDING WHEEL DRESSER

| Ref. No. | Description                    | Part Number | Qty. |
|----------|--------------------------------|-------------|------|
| 1        | Bearing Set (4 piece)          | 2155.00     | 1    |
| 2        | Cutter Set (9 piece)           | 2154.01     | 1    |
| 3        | 8-1.25 x 40mm Socket Head Bolt | 2025.00     | 1    |
| 4        | 8-1.25mm Hex Nut               | *           | 1    |
| 5        | 8mm Lock Washer                | *           | 1    |
| 6        | Hood                           | †           | 1    |
| 7        | Body                           | †           | 1    |

† Not available as replacement part.

\* Standard hardware item available locally.



## **WARRANTY**

### **FULL TWO YEAR WARRANTY ON PALMGREN GRINDING WHEEL DRESSER**

If within two full years from the date of purchase, this Palmgren Grinding Wheel Dresser fails due to a defect in material or workmanship, Palmgren will repair it free of charge.

To order parts for a non-warranty repair, please contact your preferred Palmgren distributor. To obtain the names of Palmgren distributors or to arrange warranty return, please call Palmgren Steel Products directly at (800) 621-6145.

This warranty gives you specific legal rights and you may have other rights which vary from state to state.

Palmgren Steel Products, Inc., 914 N. Kilbourn Avenue, Chicago, IL 60651-3426

