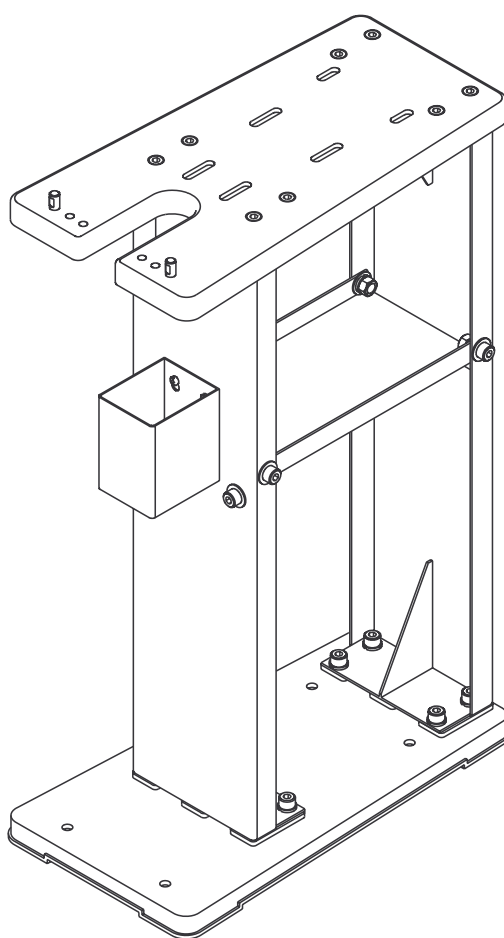




ARBOR PRESS STAND



Read carefully and follow all safety rules and operating instructions before first use of this product.

DESCRIPTION

Palmgren Arbor Press Stand is designed to accommodate Palmgren arbor presses. Stand features sturdy steel and cast iron construction. Holes in stand top are conveniently located for easy mounting of arbor press.

SAFETY RULES

WARNING: For your own safety read all of the instructions and precautions before operating tools.

- Know the stand and the tool. Read and understand manuals and other instructions provided.
- Securely bolt stand to floor.
- Use only accessories designed for stand or tool.
- Make sure tools and accessories are securely clamped.
- Always check your set up. For example, see that ram contacts workpiece squarely before applying pressure.
- Keep your mind on your work. Be alert.
- Dress properly. Do not wear jewelry, gloves, or loose clothing.
- Wear a face shield or safety glasses.
- Never place hands in jeopardy.

DIMENSIONS

Refer to Figure 1.

Stock No.	70103A	
Top Surface	A	11 ¹³ / ₁₆ x 22 ¹ / ₁₆ "
Base	B	11 ¹³ / ₁₆ x 22 ¹ / ₄ "
Height	C	33 ¹³ / ₁₆ "
Weight	100 lbs	

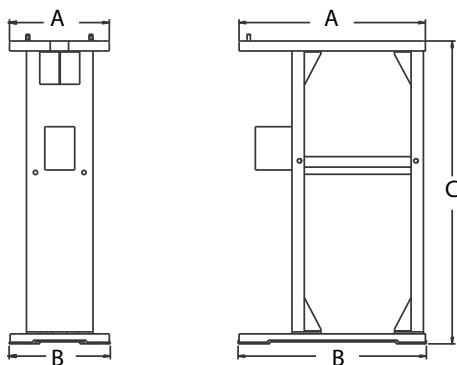


Figure 1 - Dimensions

ASSEMBLY

Refer to Figure 3, page 5.

- Place base (Ref. No. 1) on floor. Align holes in bottom of front and rear panels (Ref. Nos. 2 and 9) to holes in base and secure with bolts (Ref. No. 3) and lock washers. Leave bolts loose.
- Align holes in tray (Ref. No. 13) with holes in front panel. Insert socket head bolts with flat washer (Ref. Nos. 3 and 4) through the panel and tray. Slide flat washer and lock washer onto bolts and secure each with hex nut (Ref. Nos. 4, 6 and 14). Leave nuts loose. Repeat for rear panel (Ref. No. 2).
- Align holes in top (Ref. No. 5) with holes in panels. Insert bolts (Ref. No. 7) through top and panels. Secure bolts with flat washers, lock washers and hex nuts (Ref. Nos. 4, 6 and 14). Leave nuts loose.
- Adjust pieces square to each other. Tighten all bolts and nuts securely.
- Insert pan head screws (Ref. No. 11), from the front, half their length into holes in front panel. Hang the cup (Ref. No. 10) on the screw threads. Adjust screws to leave 1-2 mm play between cup and panel and secure screws with hex nuts (Ref. No. 12).
- Secure base to floor. (Fasteners not supplied).

WARNING: If stand is not secured to floor, stand could tip during operation. Extreme care must be taken to avoid injury to operator or others.

OPERATION

Refer to Figure 2 and following table.

Match the model of arbor press to be installed on the stand with the location of pin holes and slots for that press. Screw pins (Ref. No. 8) into specified holes. Secure arbor press to stand in correct slots using 3/8" bolts (recommended bolt length listed below) with two flat washers, a lock washer and hex nut (not supplied).

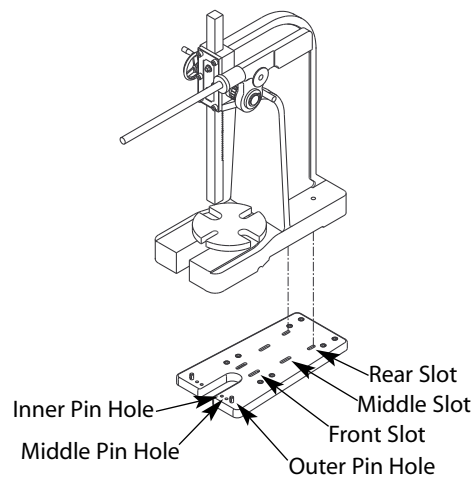


Figure 2 - Arbor Press Installation

Model Type	61401	61302	61301	61201	61101	61051
Pin Hole	Outer	Outer	Middle	Inner	Inner	Outer
Slot	Rear	Rear	Middle	Middle	Front	Front
Bolt Length	6 ¹ / ₂ "	4"	5"	4"	3 ¹ / ₄ "	2 ³ / ₄ "

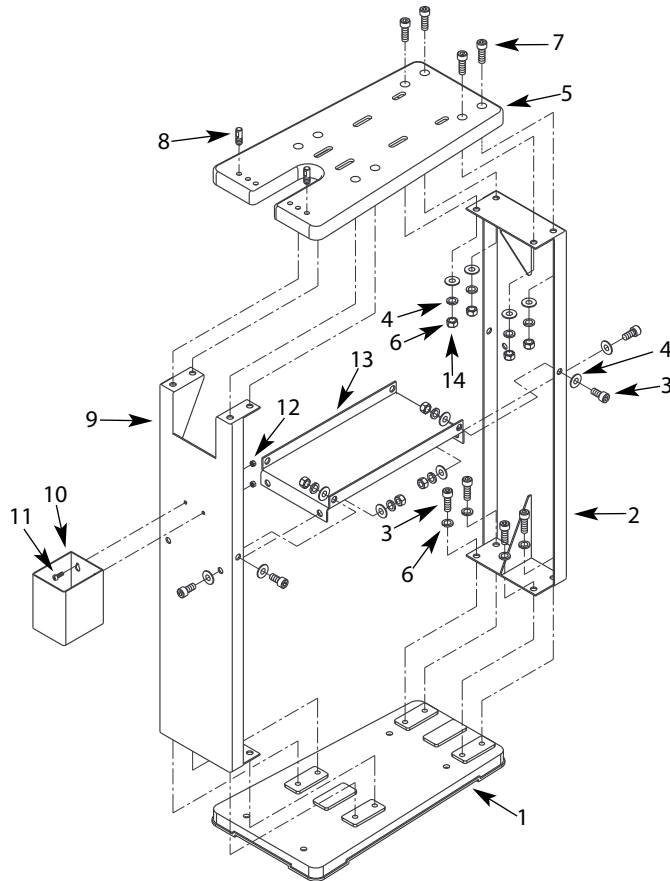


Figure 3 - Replacement Parts Illustration for Arbor Press Stand

REPLACEMENT PARTS LIST FOR ARBOR PRESS STAND

Ref. No.	Description	Part Number	Qty.
1	Base	28770.00	1
2	Rear Panel	28771.00	1
3	12-1.75 x 25mm Socket Head Bolt	*	16
4	12mm Flat Washer	*	24
5	Top	28772.00	1
6	12mm Lock Washer	*	24
7	12-1.75 x 35mm Socket Head Bolt	*	8
8	Pin	28773.00	2
9	Front Panel	28774.00	2
10	Cup	28775.00	1
11	6-1.0 x 20mm Pan Head Screw	*	2
12	6-1.0mm Hex Nut	*	2
13	Tray	28776.00	1
14	12-1.75mm Hex Nut	*	16

△ Not Shown.

* Standard hardware item available locally.

WARRANTY

Palmgren warrants their products to be free of deficiency in material or workmanship. The duration of this warranty is expressly limited to one year parts and labor unless otherwise noted beginning from the date of delivery to the original user. The following Palmgren products carry the following warranties on parts with a 1 year warranty on labor:

- USA Machine vises – Lifetime
- Imported Machine vises – 2 years
- Bench vises – 2 years
- Positioning tables – 2 years
- Bench grinders & buffers – 3 years
- Tapping machines – 2 years
- Drilling machines – 2 years
- Finishing machines – 2 years
- Band saws – 2 years
- Work stands – 2 years

The obligation of Palmgren is limited solely to the repair or replacement, at our option, at its factory or authorized repair agent of any part that should prove deficient. The warranty does not cover expendable and/or wear parts (i.e. v-belts, coated abrasives), damage to tools arising from alteration, abuse or use other than their intended purpose, packing and freight. Purchaser must lubricate and maintain the product under normal operating conditions at all times. Proper use and care instructions are provided in the operator's manual. Failure to follow these instructions will void the warranty.

This warranty is the purchaser's exclusive remedy against Palmgren for any deficiency in its products. Under no circumstances is Palmgren liable for any direct, indirect, incidental, special or consequential damages including lost profits in any way related to the use or inability to use our products. This warranty gives you specific legal rights which may vary from state to state.

SERVICE & REPAIR

1. If a Palmgren product requires a repair or warranty service **DO NOT** return the product to the place of purchase.
2. All warranty related work must be evaluated and approved by Palmgren.
3. Prior to returning any item the user must obtain factory approval and a valid RGA number.
4. For instructions and RGA number call toll free (800) 621-6145.

