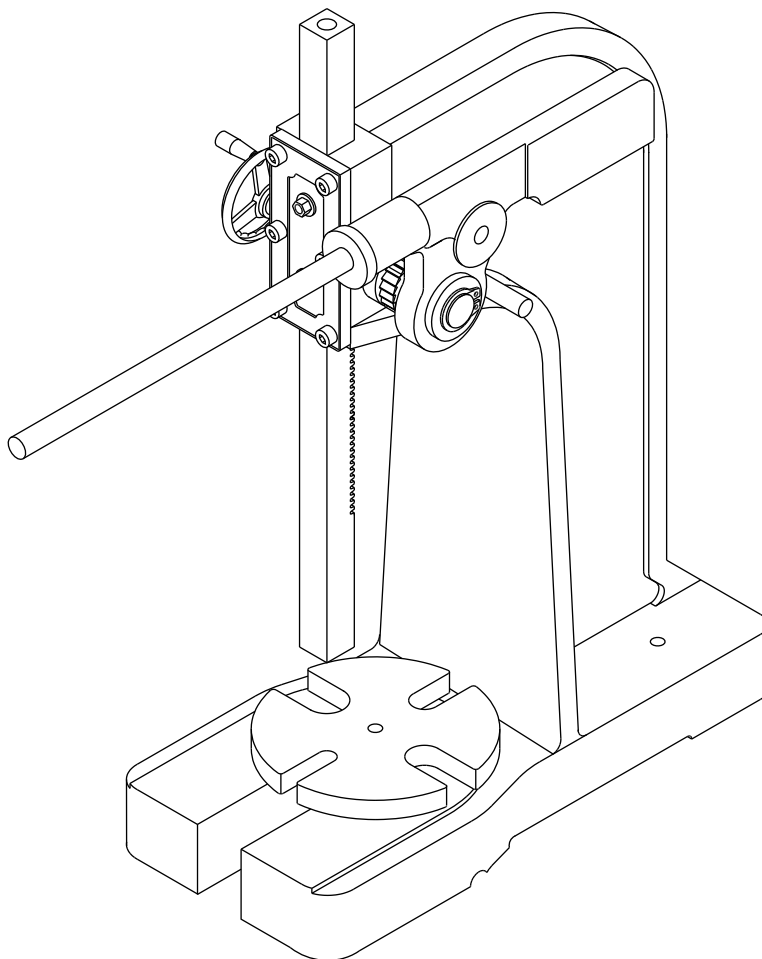




3-TON RATCHETING ARBOR PRESS



Read carefully and follow all safety rules and operating instructions before first use of this product.

DESCRIPTION

Palmgren Arbor Press is designed for riveting, squeezing, bending, punching, flattening, removing a bearing or pressing in bearings. Removable, rotating, machined anvil has 4-slots to provide convenient support for workpieces that vary in size and shape. Arbor press comes with three punches and a magnetic insert to hold the punch. Press is suited for work in production lines as well as in machine shops, automotive repair shops and home workshops. Handwheel allows operator to quickly position the ram. Ratchet allows operator to set handle to most comfortable operating position.

SAFETY RULES

- For best operation, the arbor press must be bolted to a stationary object that is also affixed to the floor.
- When using the press, be sure the work is mounted securely in it. Do not attempt to use the press with the workpiece mounted on an angle.
- Use only accessories designed for the arbor press. Attachments and equipment used in the pressing operation must be as strong as the press. Use steel collars and blocks to press against the workpiece.
- Do not overload the press by using handle extensions (cheater bars).
- If the ram is loose and drops by itself, tighten set screws (Ref. Nos. 22 and 13) for adjustment. Set screws on face plate should be tightened with the same amount of pressure.
- When not in use, the ram should be in the down position to prevent accidents.
- Know the arbor press and accessories. Read and understand owner's manual.
- Wear a face shield or safety glasses.
- Never place hands in jeopardy.
- Always check your set up, i.e., see that the ram contacts workpiece squarely before applying pressure.
- Keep your mind on your work. Be alert.
- Make sure workpiece, punch, anvil and accessories are securely clamped.
- Don't force the arbor press or its accessories.

DIMENSIONS

Refer to Figure 1.

Model Type		61302A
Base Length	L	21 1/4"
Base Width	W	9 7/8"
Height	H	27 3/4"
Max. Work Height	A	17 15/16"
Swing	2B	13 3/4"
Anvil Diameter	D	7 13/16"
Ram Dimension	R x R	1 1/4 x 1 1/4"

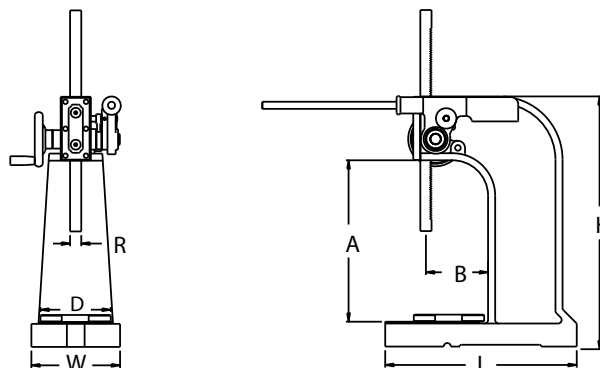


Figure 1 - Dimensions

ASSEMBLY

Refer to Figure 2.

- Loosen set screw on outside of arm (Ref. Nos. 3 and 5) and insert arm handle (Ref. No. 1). Secure with set screw.
- Install handle on handwheel securely (Ref. Nos. 17 and 18).
- Arbor press comes assembled with hole for punches on top face of ram. To use punches, reassemble arbor press ram with hole in bottom face.

NOTE: During disassembly, watch for loose pieces.

- Lower ram to anvil. Remove set screw and spring (Ref. Nos. 13 and 14). Remove socket head screws from faceplate (Ref. Nos. 21 and 24). Slide ram out of body (Ref. Nos. 25 and 12). Remove button (Ref. No. 15). Turn ram upside down and reinsert in body (teeth must mesh with pinion (Ref. No. 6). Replace faceplate. Slide button and spring into body, secure with set screw (Ref. No. 13).
- Check movement of ram—it should be smooth and not wobble or move under its own weight. To adjust ram movement, loosen hex nuts and adjust set screws (Ref. Nos. 23 and 22) using equal pressure. Secure set screws with hex nuts. Tighten set screw (Ref. No. 13) to reduce side play.
- Mount arbor press securely to bench or stand. Secure arbor press using two mounting holes on the body (Hardware is not supplied.)

MAINTENANCE

- Oil the pinion periodically through the oil fitting, and grease the ram rack whenever necessary. Keep work area clean. Clean the arbor press of dirt and debris after every use.
- If the ram is loose and drops by itself, adjust ram movement as described above in ASSEMBLY.

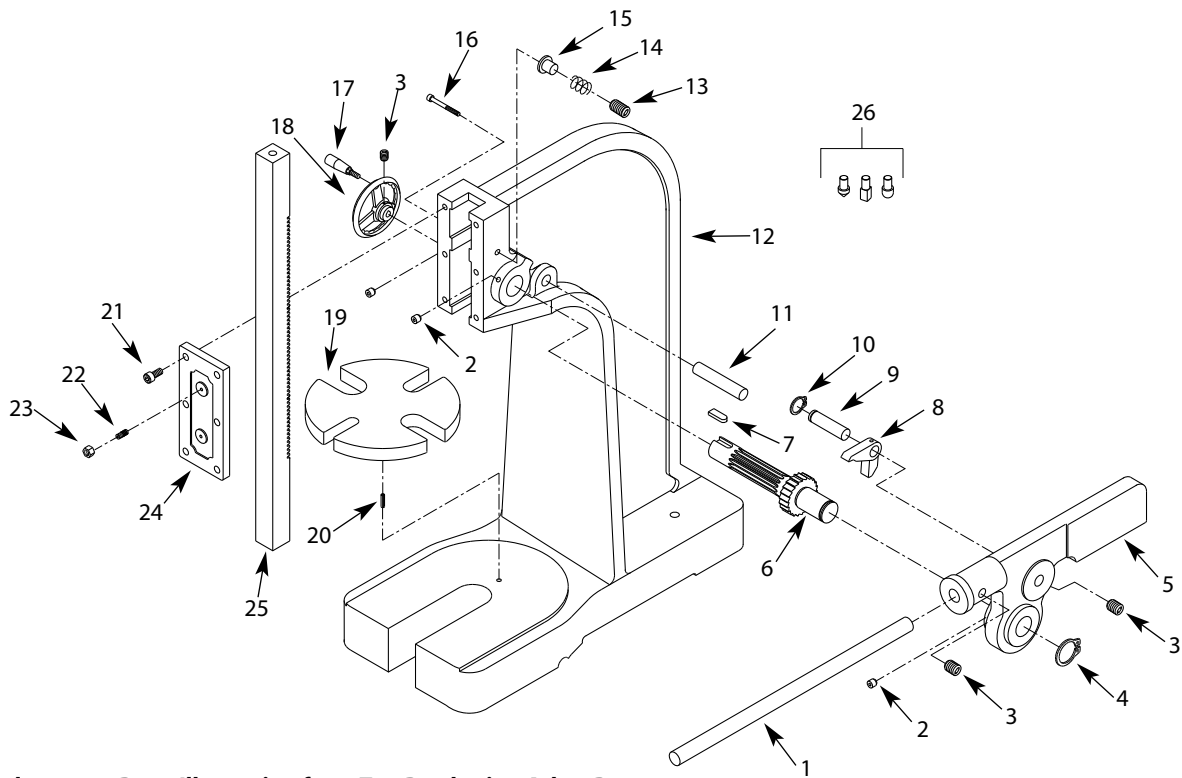


Figure 2 - Replacement Parts Illustration for 3-Ton Ratcheting Arbor Press

REPLACEMENT PARTS LIST FOR RATCHETING ARBOR PRESS

Ref. No.	Description	Part Number	Qty.
1	Arm-handle	28785.00	1
2	Oil Fitting	17987.00	3
3	8-1.25 x 8mm Set Screw	*	3
4	3AMI-30 Retaining Ring	01465.00	1
5	Arm	28786.00	1
6	Pinion	28787.00	1
7	8 x 7 x 28mm Key	17383.00	1
8	Pawl	28788.00	1
9	Shaft	28789.00	1
10	3AMI-16 Retaining Ring	07411.00	1
11	Stop	28790.00	1
12	Body	†	1
13	10-1.5 x 15mm Set Screw	17387.00	1
14	Spring	28791.00	1
15	Button	28792.00	1
16	5-0.8 x 30mm Socket Head Bolt	*	1
17	Handle	28793.00	1
18	Handwheel	28794.00	1
19	Anvil	28795.00	1
20	6 x 18mm Spring Pin	17396.00	1
21	10-1.5 x 20mm Socket Head Bolt	*	6
22	8-1.25 x 30mm Set Screw	*	2
23	8-1.25mm Hex Nut	*	2
24	Face Plate	28796.00	1
25	Ram with Magnet	28797.00	1
26	Punch Set (3 pieces-round; point; square)	17453.00	1
Δ	Operator's Manual	28800.00	1

Δ Not Shown.

* Standard hardware item available locally.

† Not available as replacement part.

WARRANTY

Palmgren warrants their products to be free of deficiency in material or workmanship. The duration of this warranty is expressly limited to one year parts and labor unless otherwise noted beginning from the date of delivery to the original user. The following Palmgren products carry the following warranties on parts with a 1 year warranty on labor:

- USA Machine vises – Lifetime
- Imported Machine vises – 2 years
- Bench vises – 2 years
- Positioning tables – 2 years
- Bench grinders & buffers – 3 years
- Tapping machines – 2 years
- Drilling machines – 2 years
- Finishing machines – 2 years
- Band saws – 2 years
- Work stands – 2 years

The obligation of Palmgren is limited solely to the repair or replacement, at our option, at its factory or authorized repair agent of any part that should prove deficient. The warranty does not cover expendable and/or wear parts (i.e. v-belts, coated abrasives), damage to tools arising from alteration, abuse or use other than their intended purpose, packing and freight. Purchaser must lubricate and maintain the product under normal operating conditions at all times. Proper use and care instructions are provided in the operator's manual. Failure to follow these instructions will void the warranty.

This warranty is the purchaser's exclusive remedy against Palmgren for any deficiency in its products. Under no circumstances is Palmgren liable for any direct, indirect, incidental, special or consequential damages including lost profits in any way related to the use or inability to use our products. This warranty gives you specific legal rights which may vary from state to state.

SERVICE & REPAIR

1. If a Palmgren product requires a repair or warranty service **DO NOT** return the product to the place of purchase.
2. All warranty related work must be evaluated and approved by Palmgren.
3. Prior to returning any item the user must obtain factory approval and a valid RGA number.
4. For instructions and RGA number call toll free (800) 621-6145.